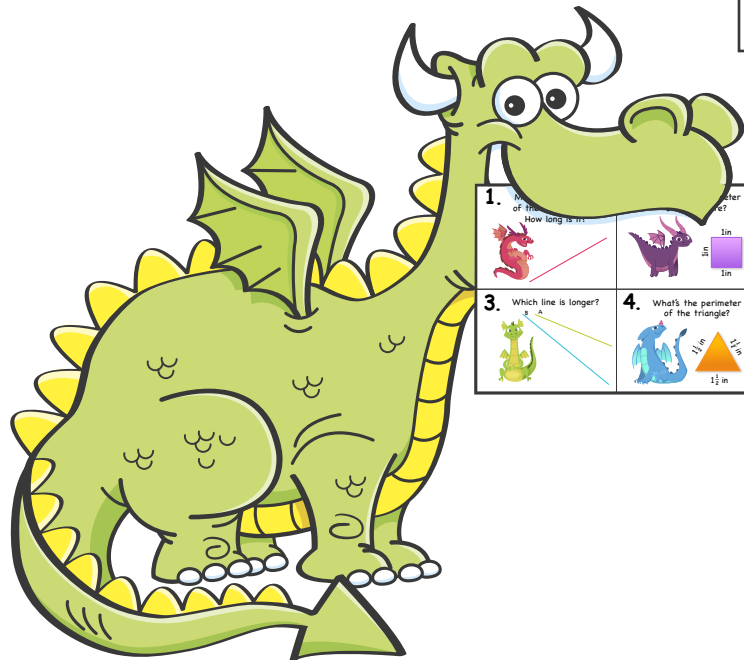


Measuring

Task Cards and Recording Sheets



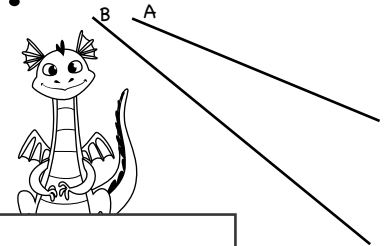
1. Measure the length of the line in inches. How long is it?



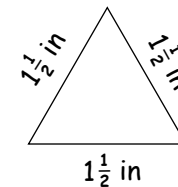
2. What's the perimeter of the square?



3. Which line is longer?



4. What's the perimeter of the triangle?



About this product

In this pack there are 3 versions so you can pick the one that best fits your needs.

- Color
- Black and White
- Anytime – Pages without images that can be used anytime.

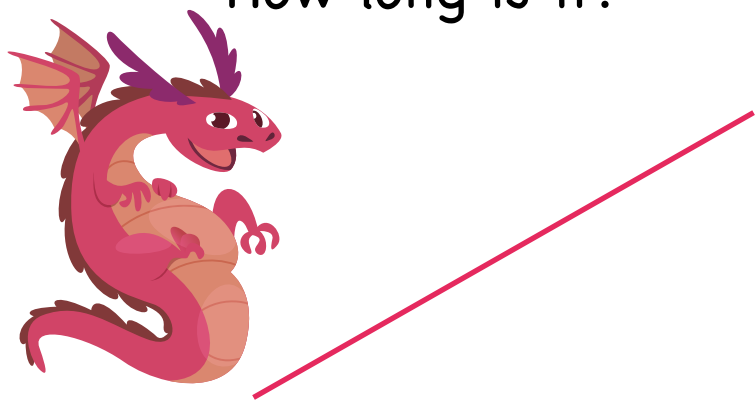
Tips:

These cards can be used in many ways. You can play a whole class scoot game to review a concept. You could also use them for extra practice at your small group table.

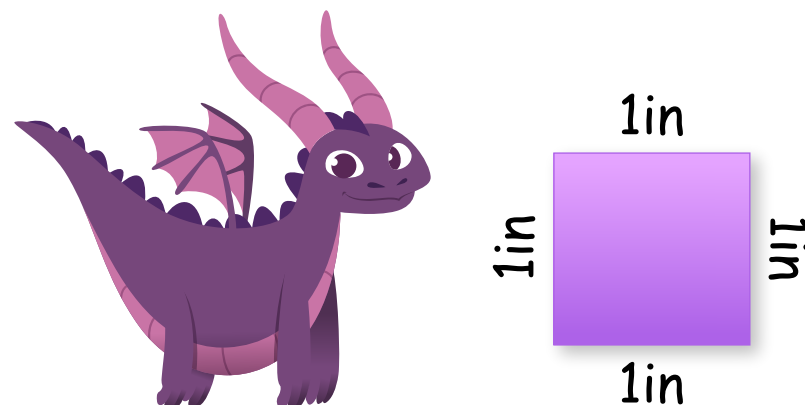
Features:

- Measuring lines in inches & centimeters
- Area & Perimeter
- What is the best tool?
- What is the best unit of measurement?
- Calculating the difference between two line lengths

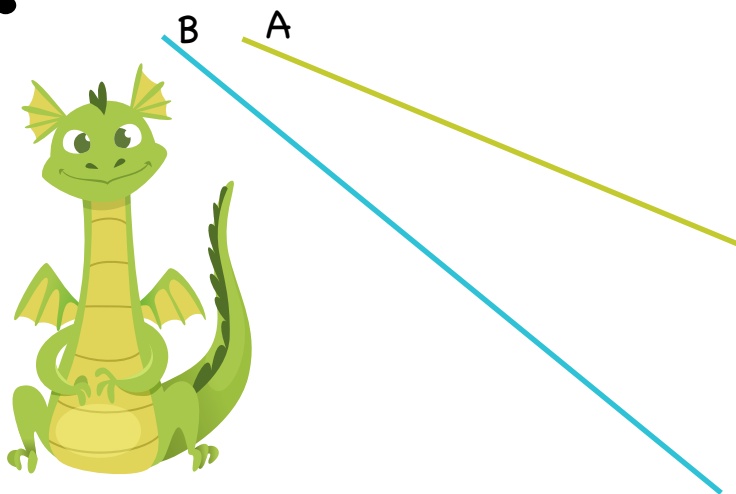
- 1.** Measure the length of the line in inches.
How long is it?



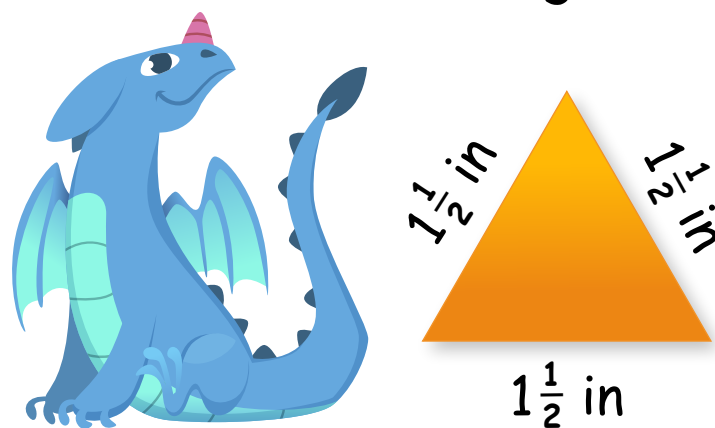
- 2.** What's the perimeter of the square?



- 3.** Which line is longer?

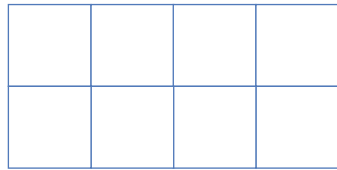


- 4.** What's the perimeter of the triangle?



5.

What is the area
of the shape?
(square centimeters)



6.

Measure the length of
the line to the nearest
centimeter.



7.

Which line is longer?



A



B



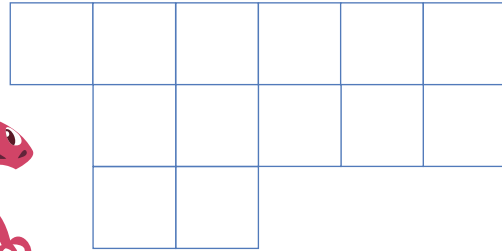
8.

Use your ruler to measure
each side to the nearest
cm and then find the
perimeter.



9.

What is the area
of the shape?
(square centimeters)



10. Measure the length of
the line to the nearest
centimeter.



11.

Which is bigger,
a foot or
a meter?



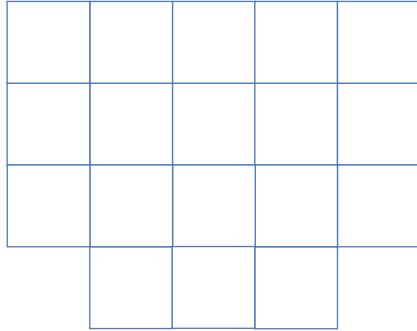
12.

What tool would you
use to measure how
long your eraser is?



- a.) Scale
- b.) Ruler
- c.) Yard Stick

13. What is the area
of the shape?
(square centimeters)



14. Use centimeters to
determine the perimeter
of this shape



15. Which is smaller,
an inch or
a centimeter?



16. What tool would you
use to measure how
long your desk top is?

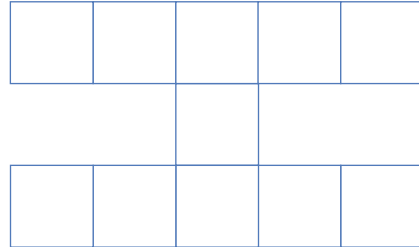


- a.) Ruler
- b.) Scale
- c.) Yard Stick

17.

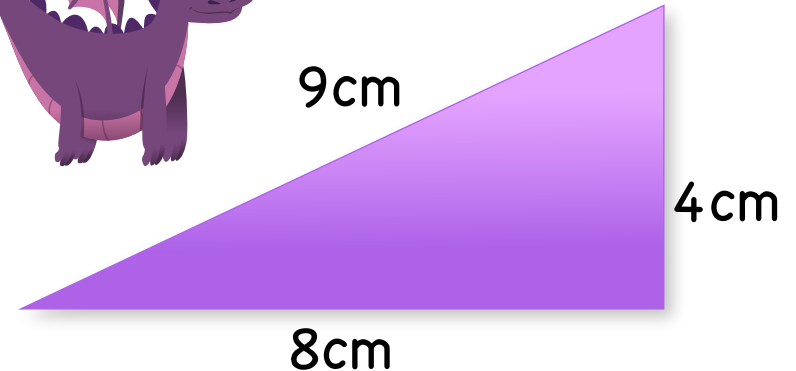
What is the area
of the shape?

(square centimeters)



18.

What's the perimeter
of this shape?



19.

What unit would you
use to measure the
distance between
New York City, NY
and
San Diego, CA



20.

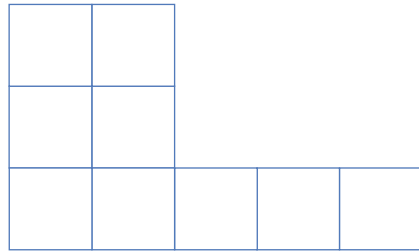
What unit would you
use to measure the
perimeter of the
classroom?



- a.) Centimeter
- b.) Mile
- c.) Meter
- d.) Kilometer

21.

What is the area
of the shape?
(square centimeters)



22.

7cm



7cm

What's the
perimeter of this
shape?

7cm

7cm

23.

Which one is bigger,
a mile
or
a kilometer?



24.

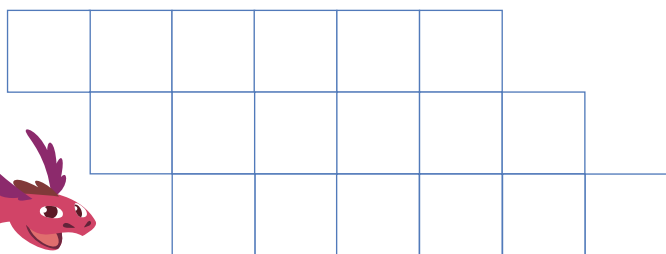
What unit would you
use to measure the
length of a bus?



- a.) Meters
- b.) Inches
- c.) Miles

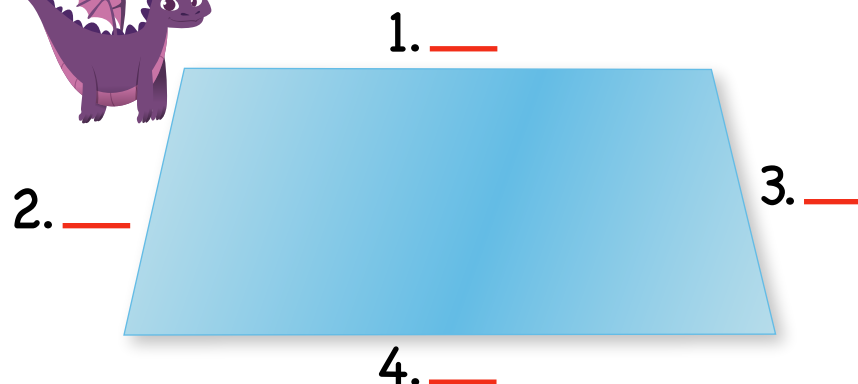
25.

What is the area
of the shape?
(square centimeters)



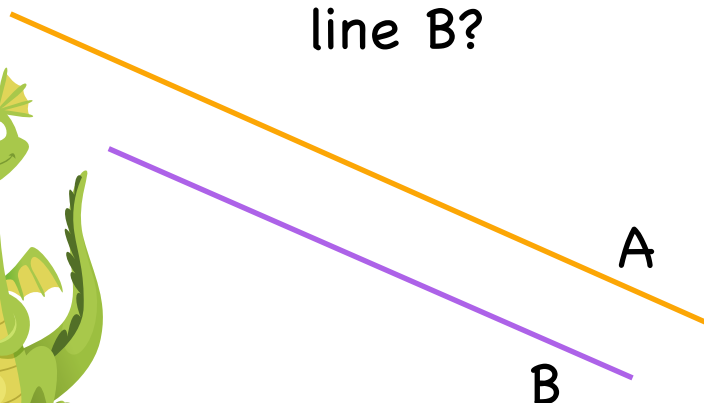
26.

Measure the length
of each side to the
nearest half centimeter.



27.

About how many inches
longer is line A than
line B?



28.

What unit would you
use to measure
your pencil?



- a.) Meters
- b.) Centimeters
- c.) Kilometers

29. If you wanted to know how much you weigh what tool would you use?



- a.) Ruler
- b.) Scale
- c.) Compass

30. If you were to measure the height of the door, what unit would you measure in?



- a.) Pounds
- b.) Feet
- c.) Miles

Measuring

Name _____



1. 3 inches	2. 4 inches	3. Line B	4. 4.5 inches	5. 8 cm²	6. 4 cm
7. Line A	8. 14 cm	9. 13 cm²	10. 12 cm	11. meter	12. B
13. 18 cm²	14. 24 cm	15. Centimeter	16. A	17. 11 cm²	18. 21 cm
19. Miles	20. C	21. 9 cm²	22. 28 cm	23. Mile	24. A
25. 18 cm²	26. 1. 7 cm 2. 3.5 cm 3. 3.5 cm 4. 8.5 cm	27. 4 inches - 3 inches 1 inch longer	28. B	29. B	30. B

Measuring

Name _____

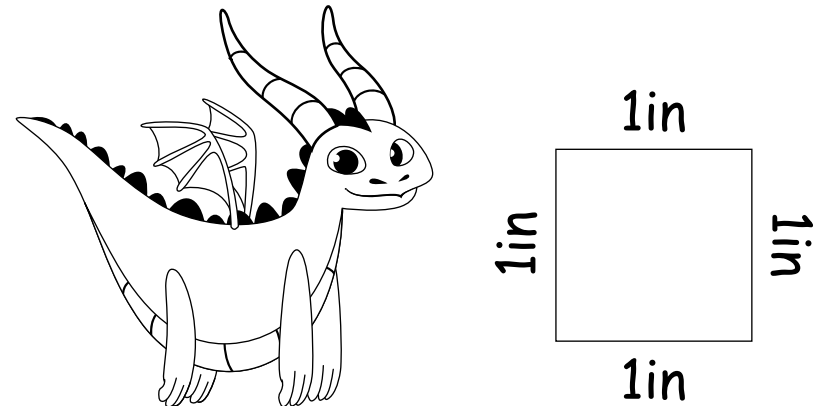


1.	2.	3.	4.	5.	6.
7.	8.	9.	10.	11.	12.
13.	14.	15.	16.	17.	18.
19.	20.	21.	22.	23.	24.
25.	26.	27.	28.	29.	30.

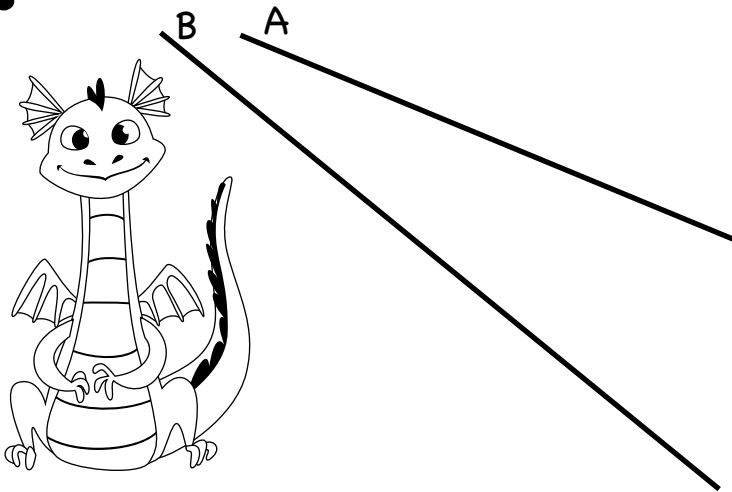
- 1.** Measure the length of the line in inches.
How long is it?



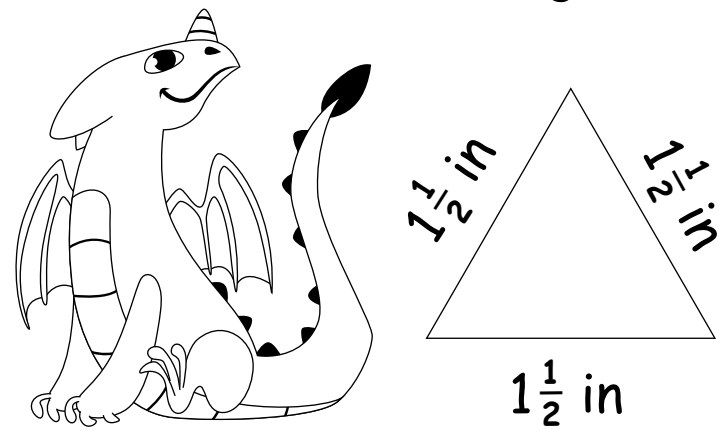
- 2.** What's the perimeter of the square?



- 3.** Which line is longer?

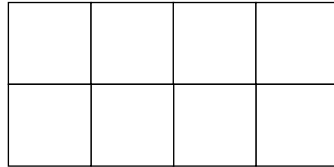


- 4.** What's the perimeter of the triangle?



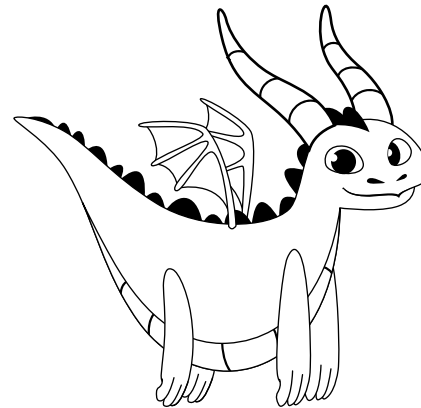
5.

What is the area
of the shape?
(square centimeters)



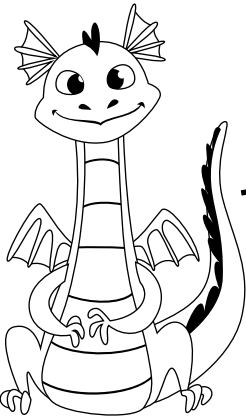
6.

Measure the length of
the line to the nearest
centimeter.



7.

Which line is longer?

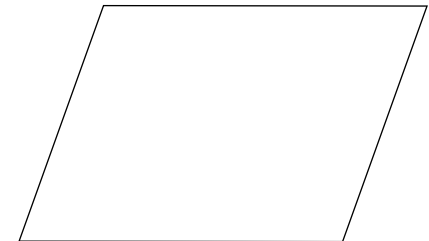


A

B

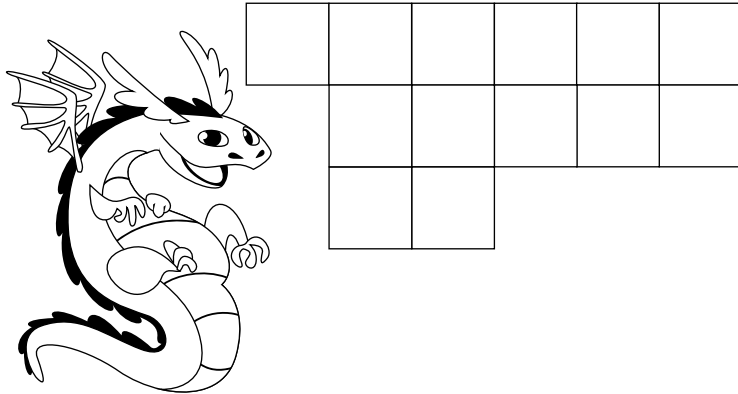
8.

Use your ruler to measure
each side to the nearest
cm and then find the
perimeter.

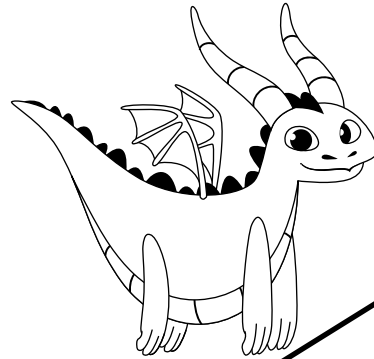


9.

What is the area
of the shape?
(square centimeters)

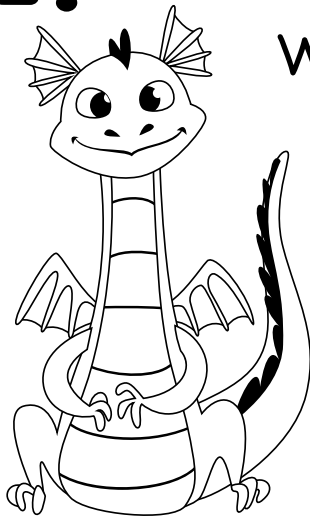


10. Measure the length of
the line to the nearest
centimeter.



11.

Which is bigger,
a foot or
a meter?



12.

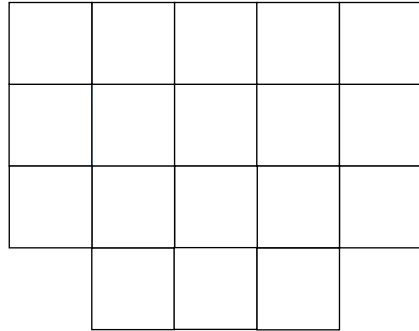
What tool would you
use to measure how
long your eraser is?



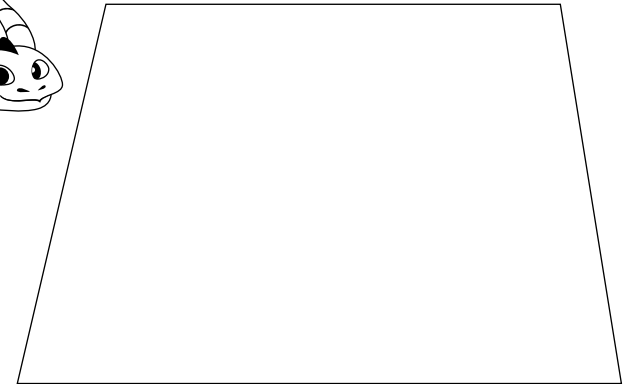
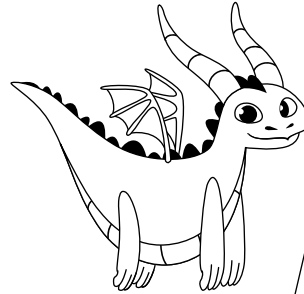
- a.) Scale
- b.) Ruler
- c.) Yard Stick

13. What is the area
of the shape?

(square centimeters)



14. Use centimeters to
determine the perimeter
of this shape



15. Which is smaller,
an inch or
a centimeter?



16. What tool would you
use to measure how
long your desk top is?

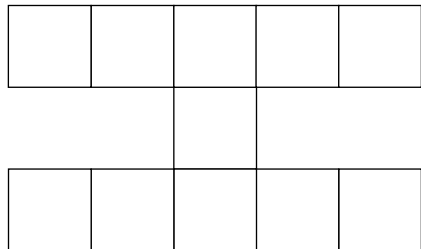


- a.) Ruler
- b.) Scale
- c.) Yard Stick

17.

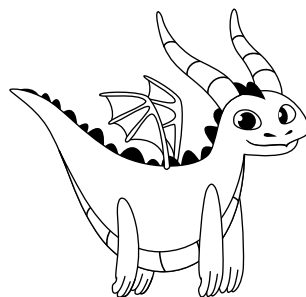
What is the area
of the shape?

(square centimeters)



18.

What's the perimeter
of this shape?



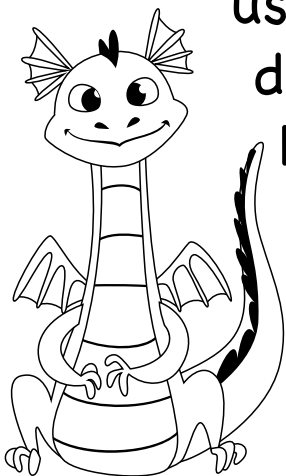
9cm

4cm

8cm

19.

What unit would you
use to measure the
distance between
New York City, NY
and
San Diego, CA



20.

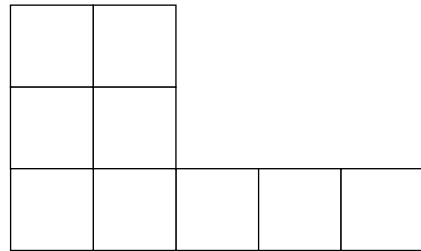
What unit would you
use to measure the
perimeter of the
classroom?



- a.) Centimeter
- b.) Mile
- c.) Meter
- d.) Kilometer

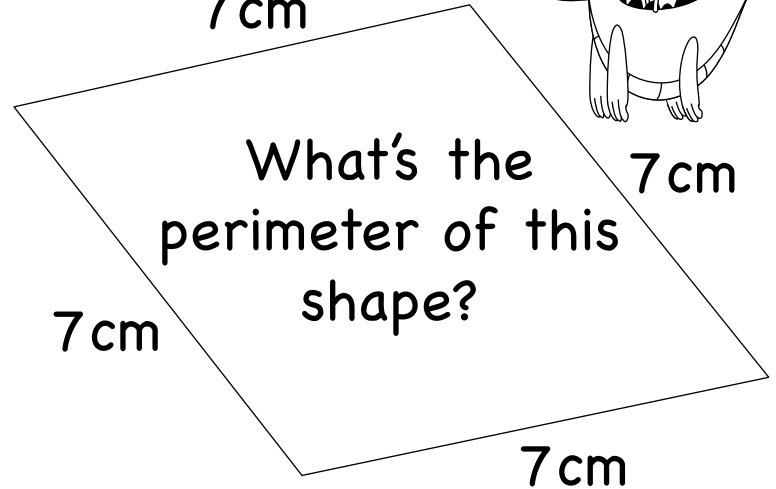
21.

What is the area
of the shape?
(square centimeters)



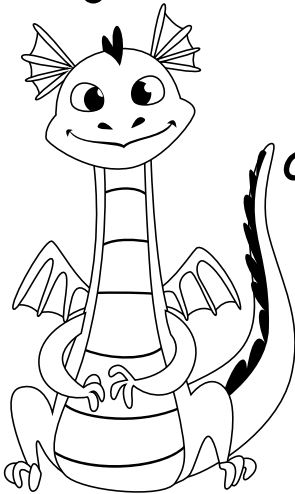
22.

7cm
7cm
7cm
7cm
What's the
perimeter of this
shape?



23.

Which one is bigger,
a mile
or
a kilometer?



24.

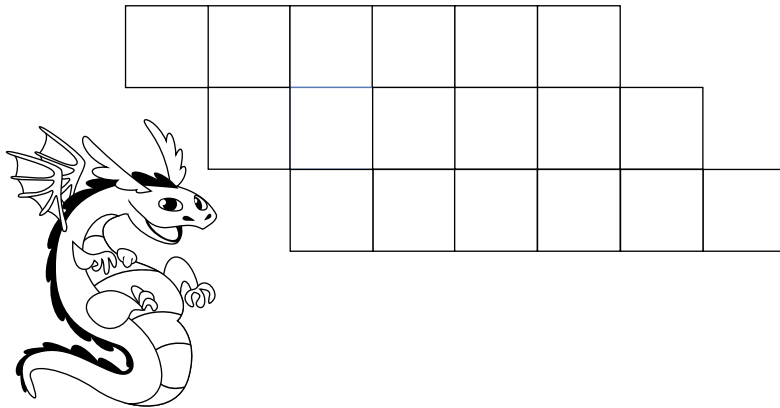
What unit would you
use to measure the
length of a bus?



- a.) Meters
- b.) Inches
- c.) Miles

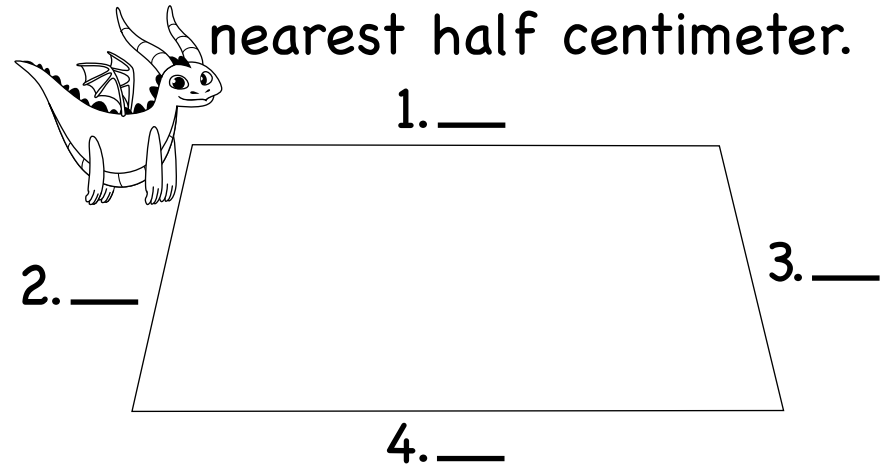
25.

What is the area
of the shape?
(square centimeters)



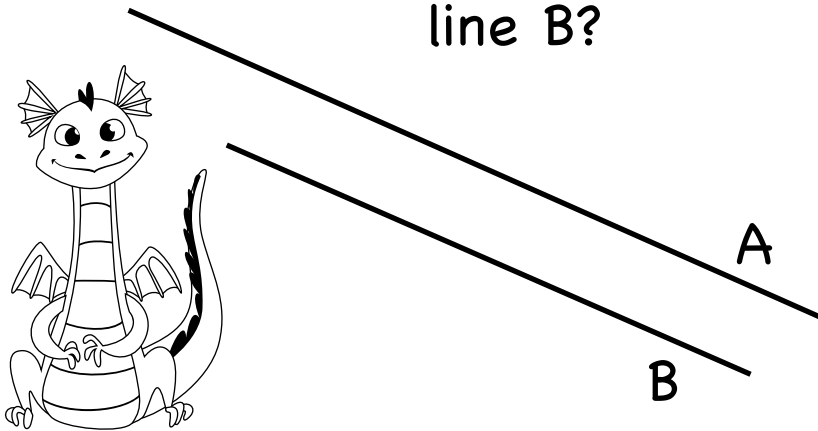
26.

Measure the length
of each side to the
nearest half centimeter.



27.

About how many inches
longer is line A than
line B?



28.

What unit would you
use to measure
your pencil?



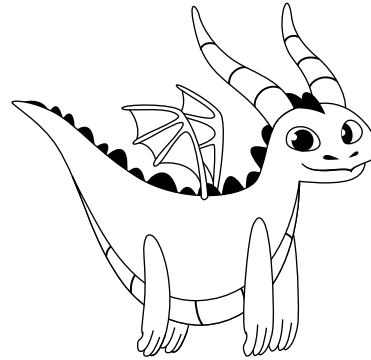
- a.) Meters
- b.) Centimeters
- c.) Kilometers

29. If you wanted to know how much you weigh what tool would you use?



- a.) Ruler
- b.) Scale
- c.) Compass

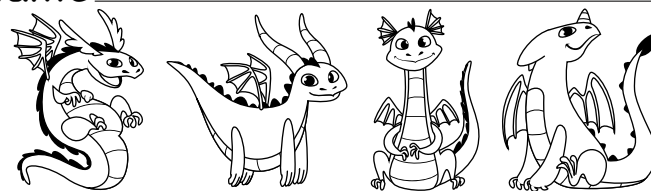
30. If you were to measure the height of the door, what unit would you measure in?



- a.) Pounds
- b.) Feet
- c.) Miles

Measuring

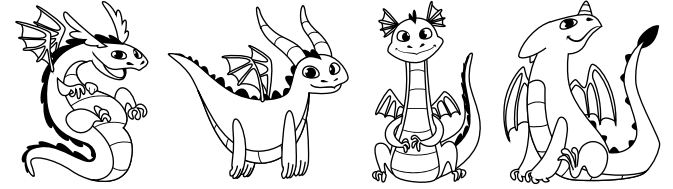
Name _____



1. 3 inches	2. 4 inches	3. Line B	4. 4.5 inches	5. 8 cm²	6. 4 cm
7. Line A	8. 14 cm	9. 13 cm²	10. 12 cm	11. meter	12. B
13. 18 cm²	14. 24 cm	15. Centimeter	16. A	17. 11 cm²	18. 21 cm
19. Miles	20. C	21. 9 cm²	22. 28 cm	23. Mile	24. A
25. 18 cm²	26. 1. 7 cm 2. 3.5 cm 3. 3.5 cm 4. 8.5 cm	27. 4 inches <u>- 3 inches</u> 1 inch longer	28. B	29. B	30. B

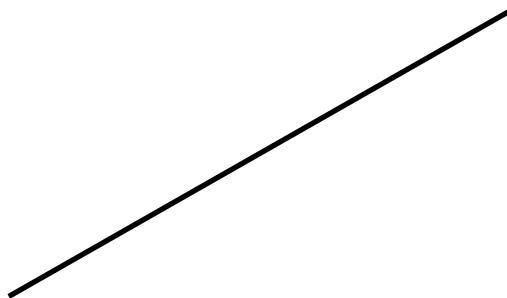
Measuring

Name _____

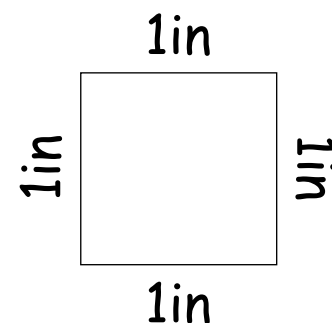


1.	2.	3.	4.	5.	6.
7.	8.	9.	10.	11.	12.
13.	14.	15.	16.	17.	18.
19.	20.	21.	22.	23.	24.
25.	26.	27.	28.	29.	30.

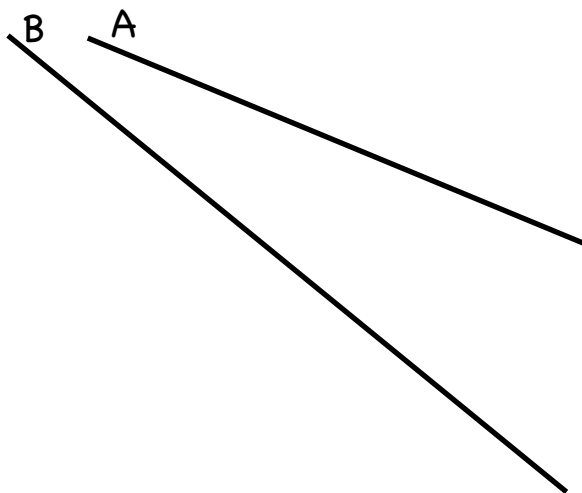
1. Measure the length of the line in inches.
How long is it?



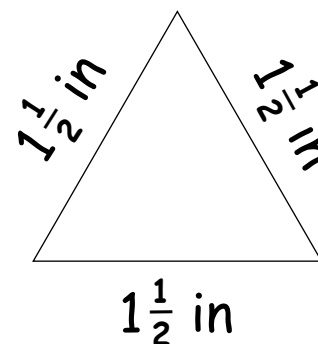
2. What's the perimeter of the square?



3. Which line is longer?

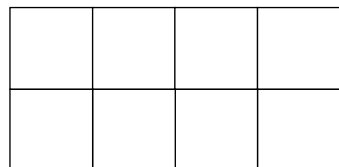


4. What's the perimeter of the triangle?



5.

What is the area
of the shape?
(square centimeters)



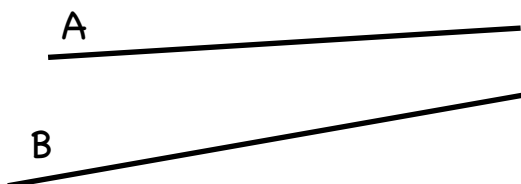
6.

Measure the length of
the line to the nearest
centimeter.



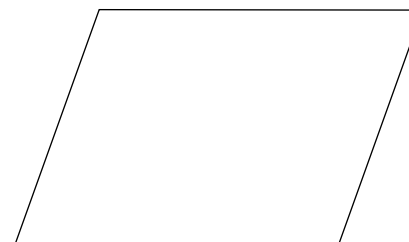
7.

Which line is longer?



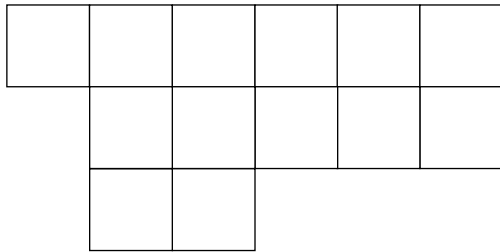
8.

Use your ruler to measure
each side to the nearest
cm and then find the
perimeter.

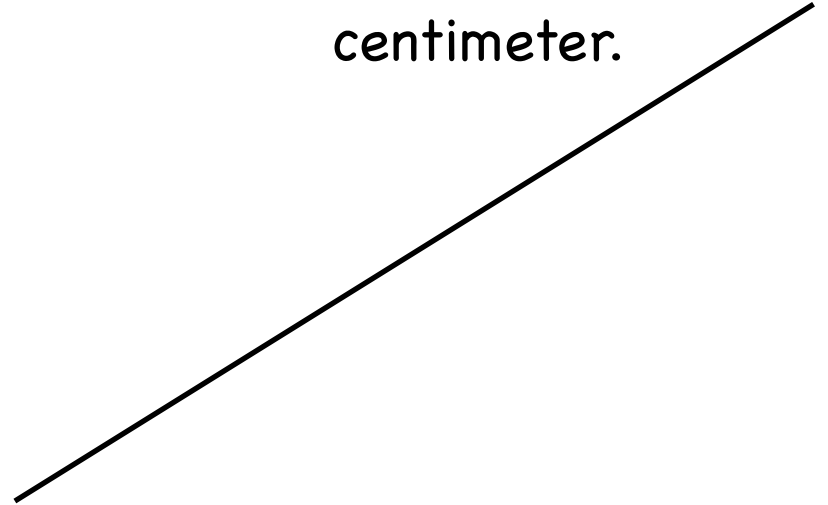


9.

What is the area
of the shape?
(square centimeters)



10. Measure the length of
the line to the nearest
centimeter.



11.

Which is bigger,
a foot or
a meter?

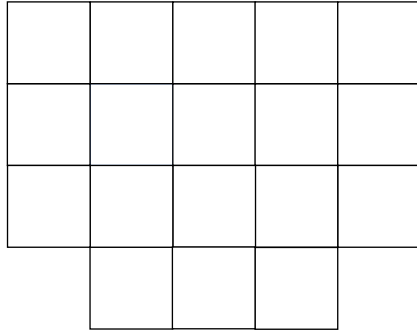
12.

What tool would you
use to measure how
long your eraser is?

- a.) Scale
- b.) Ruler
- c.) Yard Stick

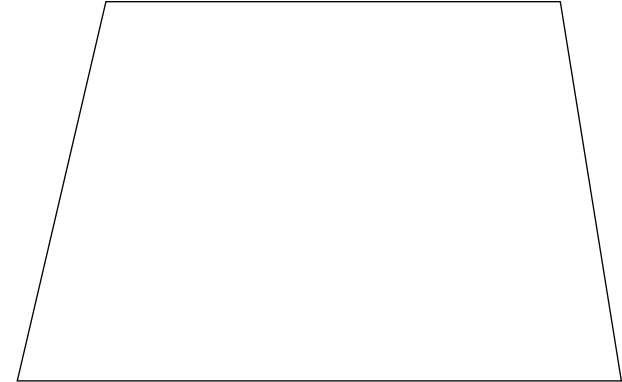
13.

What is the area
of the shape?
(square centimeters)



14.

Use centimeters to
determine the perimeter
of this shape



15.

Which is smaller,
an inch or
a centimeter?

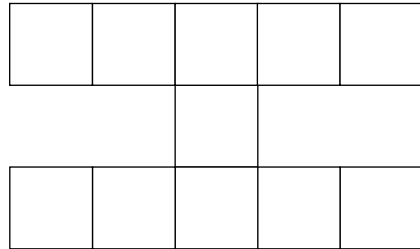
16.

What tool would you
use to measure how
long your desk top is?

- a.) Ruler
- b.) Scale
- c.) Yard Stick

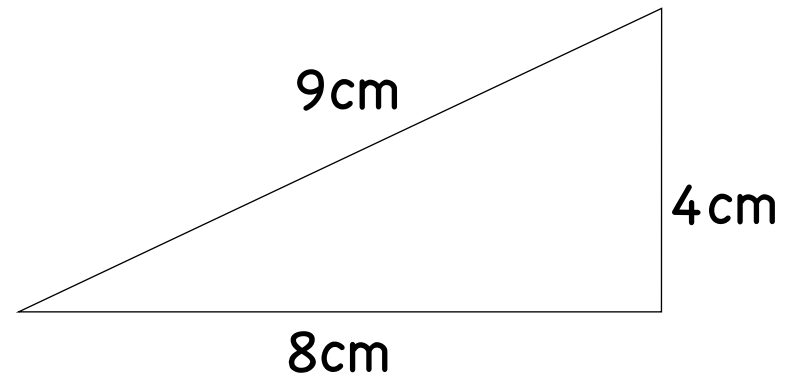
17.

What is the area
of the shape?
(square centimeters)



18.

What's the perimeter
of this shape?



19.

What unit would you
use to measure the
distance between
New York City, NY
and
San Diego, CA

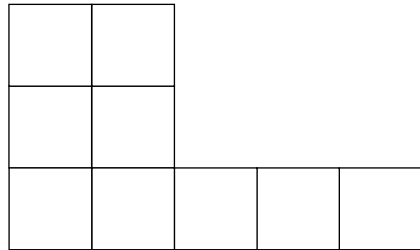
20.

What unit would you
use to measure the
perimeter of the
classroom?

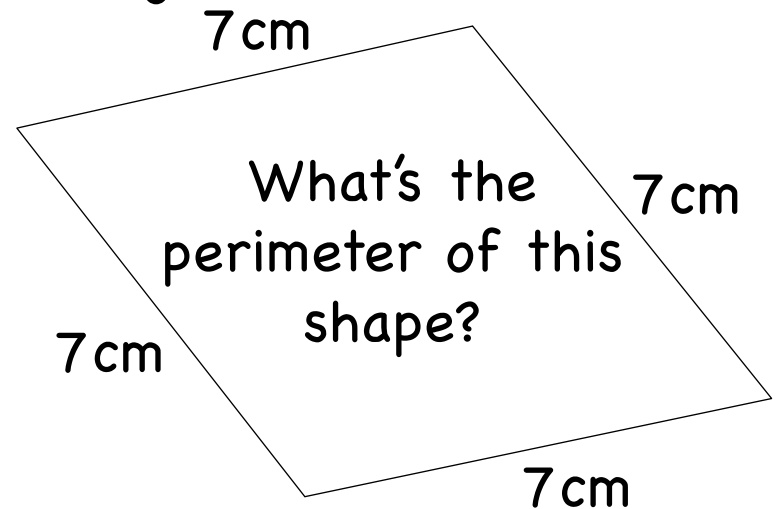
- a.) Centimeter
- b.) Mile
- c.) Meter
- d.) Kilometer

21.

What is the area
of the shape?
(square centimeters)



22.



23.

Which one is bigger,
a mile
or
a kilometer?

24.

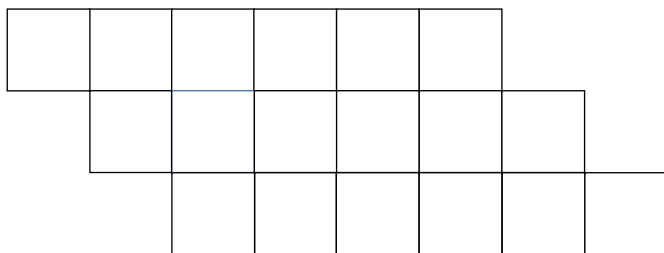
What unit would you
use to measure the
length of a bus?

- a.) Meters
- b.) Inches
- c.) Miles

25.

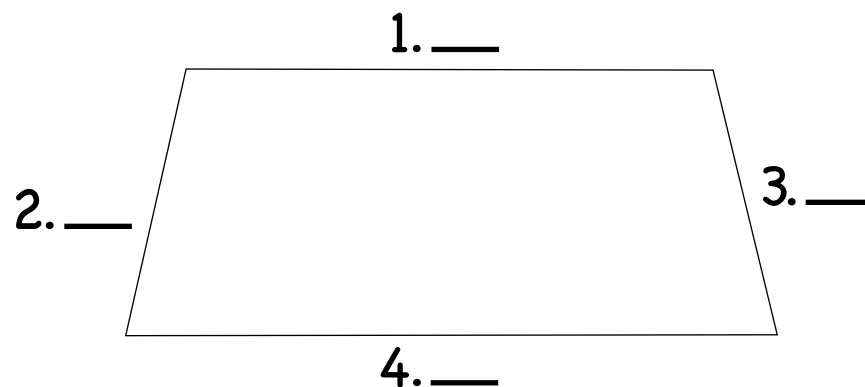
What is the area
of the shape?

(square centimeters)



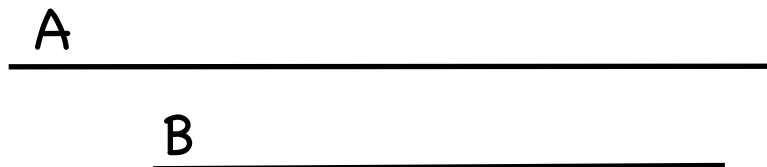
26.

Measure the length
of each side to the
nearest half centimeter.



27.

About how many inches
longer is line A than
line B?



28.

What unit would you
use to measure
your pencil?

- a.) Meters
- b.) Centimeters
- c.) Kilometers

29. If you wanted to know how much you weigh what tool would you use?

- a.) Ruler
- b.) Scale
- c.) Compass

30. If you were to measure the height of the door, what unit would you measure in?

- a.) Pounds
- b.) Feet
- c.) Miles

Measuring

Name _____

1. 3 inches	2. 4 inches	3. Line B	4. 4.5 inches	5. 8 cm²	6. 4 cm
7. Line A	8. 14 cm	9. 13 cm²	10. 12 cm	11. meter	12. B
13. 18 cm²	14. 24 cm	15. Centimeter	16. A	17. 11 cm²	18. 21 cm
19. Miles	20. C	21. 9 cm²	22. 28 cm	23. Mile	24. A
25. 18 cm²	26. 1. 7 cm 2. 3.5 cm 3. 3.5 cm 4. 8.5 cm	27. 4 inches <u>- 3 inches</u> 1 inch longer	28. B	29. B	30. B

Measuring

Name _____

1.	2.	3.	4.	5.	6.
7.	8.	9.	10.	11.	12.
13.	14.	15.	16.	17.	18.
19.	20.	21.	22.	23.	24.
25.	26.	27.	28.	29.	30.